



PG Type  
Motors

## Reference Characteristics

Motor Size	PG25L — D24	
Reduction Ratio	1 / 30.3	1 / 76
Drive Method	2 — 2 PHASE	
Drive Circuit	UNIPOLAR CONST. VOLT.	
Drive Voltage	12 [V]	
Step Angle (2phase drive)	0.495°	0.197°
DC Resistance	110 [Ω]	
Insulation Resistance	100M [Ω] MIN	
Dielectric Strength	AC 500 [V] 1 [min]	
Class of Insulation	CLASS B (U — except lead wire)	
Operating Temp.	0 [°C] ~ 50 [°C]	
Storage Temp.	- 30 [°C] ~ 80 [°C]	
Operating Hum.	20 [%] RH ~ 90 [%] RH	

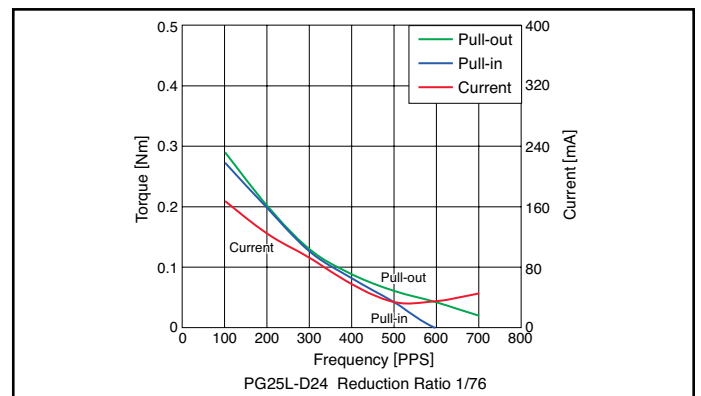
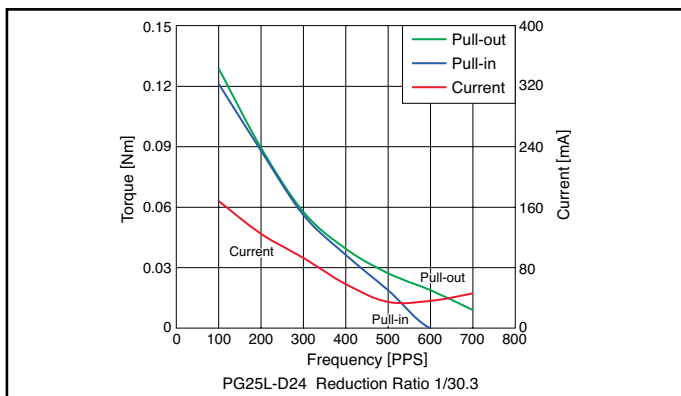
## Applications

Home electric appliances : Air-conditioners

OA Equipment : Printers / Photocopiers

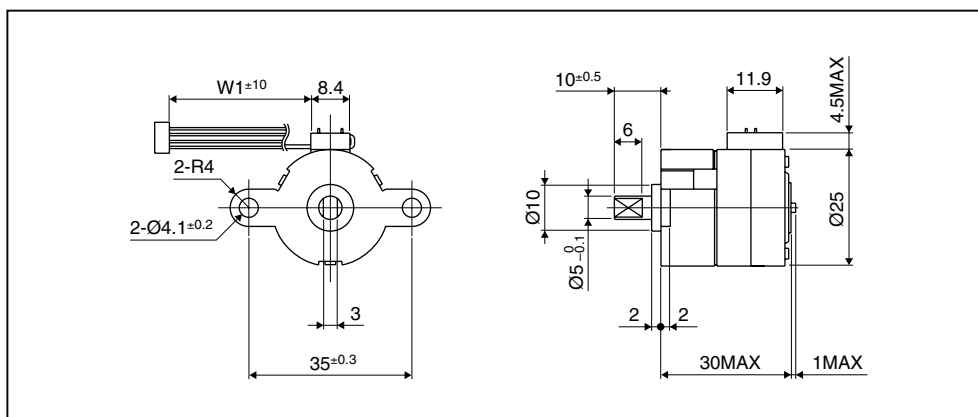
Power Tools : Drills / Drivers

## Torque Characteristics



These torque values are reference only. Heat radiation conditions and temperature rise effect by duty are different on each equipment, therefore please select motors after considering the actual equipment.

## Dimensions



Please contact our sales for inventory and lot information. Specification may be changed without notice.



PG Type  
Motors

## Reference Characteristics

Motor Size	PG25S—D48		
Reduction Ratio	1 / 30.3	1 / 76	1 / 236
Drive Method	2 — 2 PHASE		
Drive Circuit	UNIPOLAR CONST. VOLT.		
Drive Voltage	12 [V]		
Step Angle (2phase drive)	0.2475°	0.0986°	0.0317°
DC Resistance	200 [Ω]		
Insulation Resistance	100M [Ω] MIN		
Dielectric Strength	AC 500 [V] 1 [min]		
Class of Insulation	CLASS B (U — except lead wire)		
Operating Temp.	0 [°C] ~ 50 [°C]		
Storage Temp.	- 30 [°C] ~ 80 [°C]		
Operating Hum.	20 [%] RH ~ 90 [%] RH		

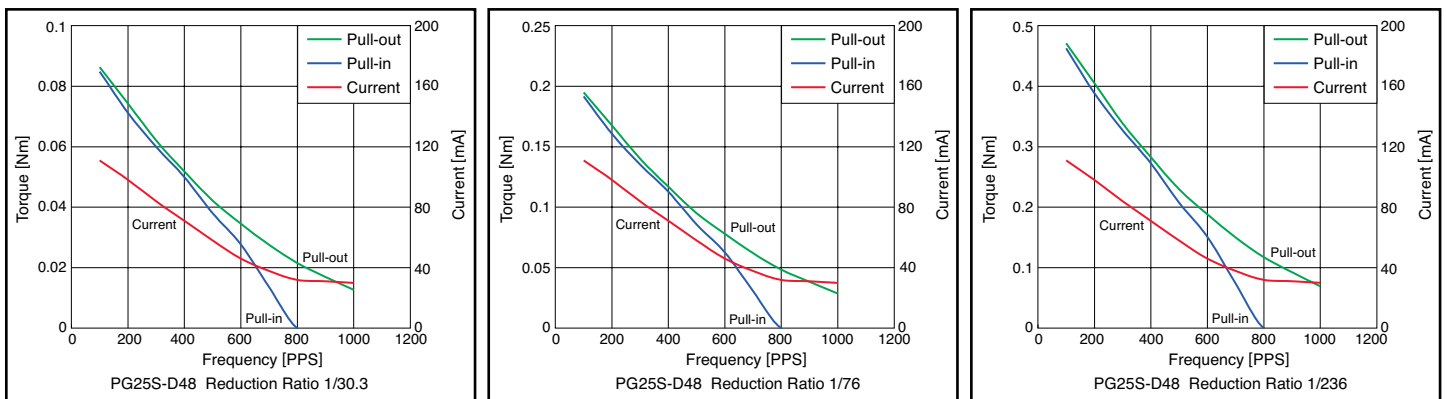
## Applications

Home electric appliances : Air-conditioners

OA Equipment : Printers / Photocopiers

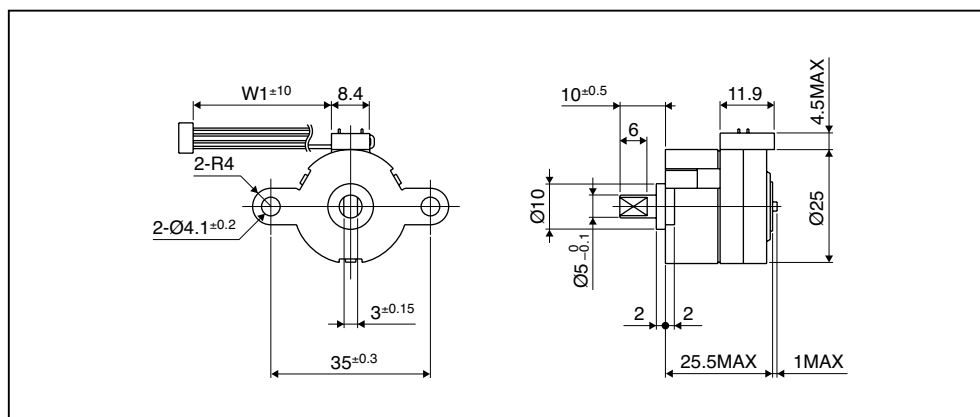
Power Tools : Drills / Drivers

## Torque Characteristics



These torque values are reference only. Heat radiation conditions and temperature rise effect by duty are different on each equipment, therefore please select motors after considering the actual equipment.

## Dimensions



Please contact our sales for inventory and lot information. Specification may be changed without notice.